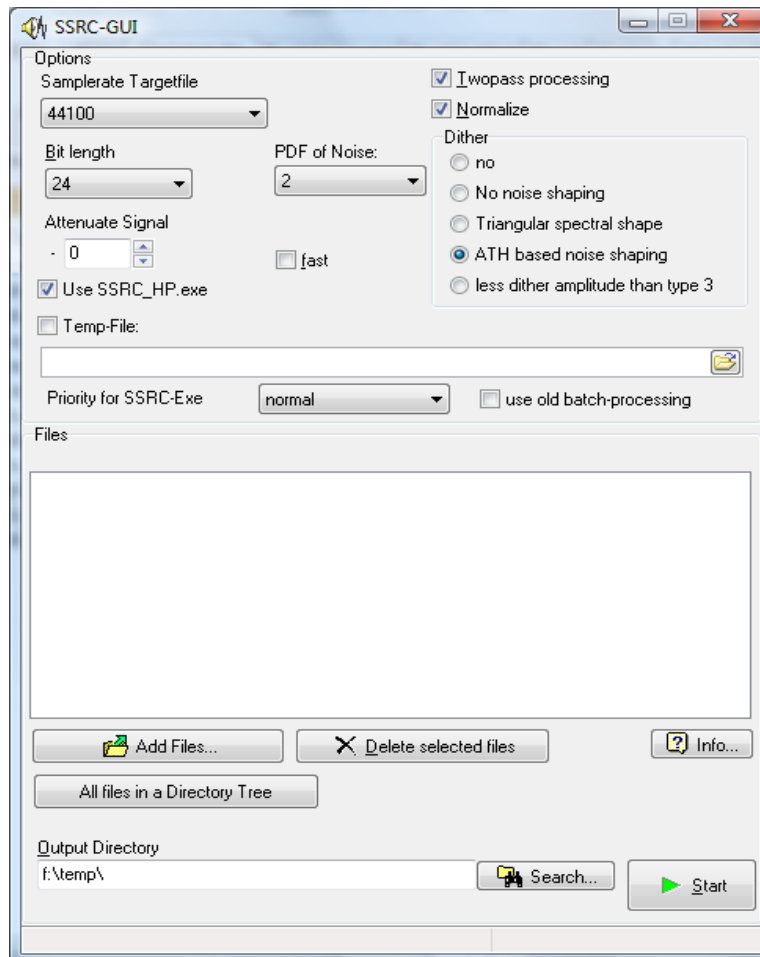


Documentation SSRC-GUI

Version 1.6.0 (2008-10-09)

Author's note: my english is not perfect. Feel free to [send](#) me your extended and improved version of this document. You can edit the file „documentation_en.odt“ with [openOffice.org](http://openoffice.org).



Picture 1: Main window of SSRC-GUI

About this documentation

This documentation was created with free software. (openoffice.org) The screenshots are from windows vista.

Licence

SSRC Gui uses the [Mozilla Public License](http://www.mozilla.org/MPL).

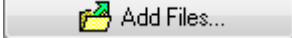
System requirements

This tool is just a GUI (Graphical user interface) for the command line tool SSRC.EXE. You have to download SSRC and copy SSRC.EXE to the program folder of SSRCGui.

SSRC can be downloaded at <http://shibatch.sourceforge.net/>

Working with the program

Add files

Please use the button  to open a file dialog for adding WAV-files. You can select more than 1 file in the selected folder by holding down CTRL-Key while clicking on the filenames.

All files in a Directory Tree

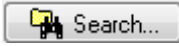
If you want to add all wav-files from a directory-tree then click on „all files in a directory tree“ and choose the directory which contains all the wav-files. All wav-files found in this dir and in the subdirs will be added to „files“-listbox.

Delete files

If you want to remove files from the list, please select the file(s) you want to delete and click on the button



Select target directory

You can enter the directory-path for the output files directly, or you can use the button  which opens a dialog for selecting the output directory. By leaving the edit box blank, converted files will be saved in the source directory.

If the directory does not exist, the program will ask you whether it should create the directory for you.

Start converting files

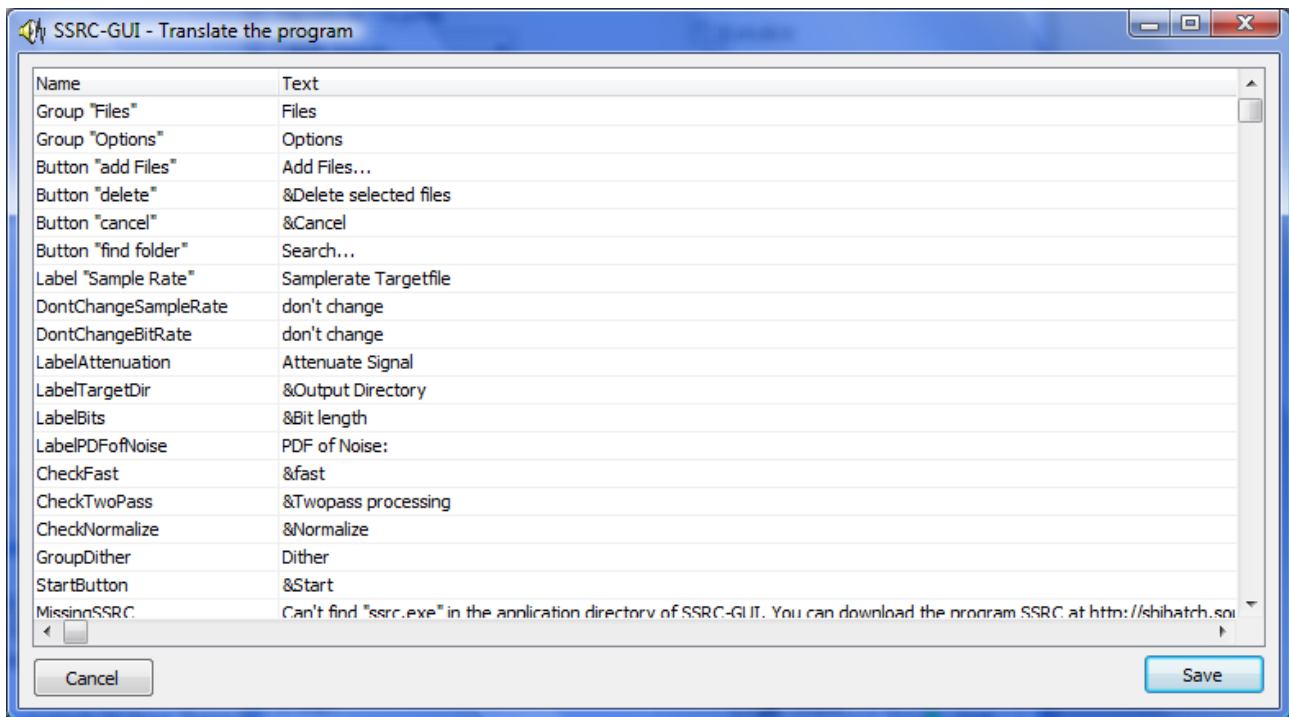
Just click on the button Start:



You will see the SSRC-Output while this tool is working. When it's done, the file-list is cleared.

Translate this tool

In the about-dialog(button „Info“ in main window) you can find a button named „translation tool“. It will open the following window:



With this dialog you can translate SSRCGui to any language supported by the charset ISO-8859-1. For example, it can be french, dutch, italian or spanish. Attention: the english translation is already saved in the default language file „language.ini“. Please backup this file before you make changes to the translation!

If you have translated SSRCGui to another language, please share your translation with other users. Please send your language.ini to patrick.hollerbach@gmx.de.

Compile the source

Compiler and environment

SSRC-GUI was created with Delphi 2007 from CodeGear. The forms are saved in text-format (Windows-ANSI-Charset).

Used Delphi-Components

TCombobox, TCheckbox, TLabel, TEdit, TListbox, TRadiobutton, TToolbutton, TBitbtn, TMemo, TApplicationEvents

Used 3rd party components / libraries

Jedi Code Library (JCL): <http://jcl.sf.net>

JCLDebug, JclHookExcept

Jedi Visual Component Library (JVCL): <http://jvcl.sf.net>

TJvCreateProcess, TJvBrowseForFolderDialog, TJvLabel

Others

RTLVCLOptimize (by Andreas Hausladen), PHOUtils, MadExcept

Change-Log

Changes in version 1.6.0:

- improved appearance on Windows Vista
- new „batch-Mode“ for adding all files in all subdirectories.

Changes in version 1.5.0:

- by default, SSRC-GUI now calls SSRC directly instead of creating a batchfile. SSRC output is captured and displayed by the GUI.
- New option „priority for SSRC.EXE“: sets the process priority
- New option „use old batch-processing“: switches to the method calling ssrc in a batchfile (used in SSRC-GUI before 1.5.0). Check this option if you have problems running SSRC-GUI with the default method.
- Refactored sourcecode

Changes in version 1.4.0:

- new option „Temp-File“
- If you put SSRC_HP.EXE to the directory of SSRC-GUI then you can see and enable option „use SSRC_HP.EXE“
- Exception found in english version: calling SSRC didn't work without changing samplerate AND PDF. Now it runs without changing any of this options.

New functions in version 1.3.2:

- translation tool: easy to use translation-table to translate SSRC Gui to other languages
- refactored code

New functions in Version 1.3.1:

- Compatible with Windows Vista
- all buttons can be reached by pressing TAB and have a caption - improvement for blind users
- small changes to source
- now compiled with Turbo Delphi 2006

Neuerungen in Version 1.3.0:

- Some visual improvements for Windows XP users with active themes.